

Elegant Universe



Limelight Quilt

Featuring the
Elegant Universe Collection

by **Lonni Rossi**

Quilt designed by **Lonni Rossi**
and made by **Lisa Kaupp**

Finished size: 41" x 51"



makower uk[®]

1384 Broadway • New York, NY 10018
(800) 223-5678 • www.andoverfabrics.com

Limelight Quilt

Introducing Andover Fabrics new collection: *Elegant Universe* by Lonni Rossi

Quilt designed by Lonni Rossi and quilted by Lisa Kaupp

Quilt finishes 41" x 51"
12 Pieced Blocks: 10" x 10"

Planning

Quilters familiar with Lonni Rossi's previous fabric collections know how unusual and elegant her designs are. Here, the patterned fabrics are allowed to take center stage in this graphic, contemporary quilt. Since many of the fabrics change from one part to another, the same fabric used in different blocks can take on a new look. The thin stripes in the borders are fused after the entire quilt is constructed, so you may be surprised that the quilt is easier than it looks. Follow the directions precisely if you want your quilt to look just like Lonni's. Or, follow your own creative intuition and join fabrics in different combinations.

Print pattern on 8½" x 14" legal size paper.

Fabric Requirements and Cutting Directions

Note: Fabric combinations for each block are listed after the cutting requirements.

3077-K ½ yard Black Lonni's Petals (blocks)

Cut (2) block sides, 1 reversed

3077-LG ½ yard Green/Gold Lonni's Petals (blocks)

Cut (2) strips 4½" x 14" for block center

Cut (3) strips 1½" x 14" for block center

Cut (8) strips 1¼" x 14" for block center

*3077-N2 ½ yard New Brown Lonni's Petals (blocks)

Cut (4) strips 4½" x 14" for block center

Cut (6) strips 1½" x 14" for block center

Cut (2) block sides, 1 reversed

4247-L 1 yard Khaki/Lime Swirl Bursts (blocks, border base & stripes)

Cut (1) left border base strip 6" x 10"

Cut (2) strips 4½" x 14" for block center

Cut (3) strips 1½" x 14" for block center

Cut (8) strips 1¼" x 14" for block center

Cut (6) block sides, 3 reversed

Cut (1) strip 3" x 18" for fusing, cut into (4) strips ⅝" x 18" for top border

Cut (1) strip 3" x 8" for fusing, cut into (3) strips ⅝" x 8" for left border

4247-N 1 yard Brown/Purple Swirl Bursts (blocks, border base & stripes)

Cut (1) left border base strip 6" x 13½"

Cut (2) strips 4½" x 14" for block center

Cut (3) strips 1½" x 14" for block center

Cut (4) strips 1¼" x 14" for block center

Cut (2) block sides, 1 reversed

Cut (1) strip 2" x 21" for fusing, cut into (2) strips ⅝" x 21" for bottom border

Cut (1) strip 3" x 12" for fusing, cut into (4) strips ⅝" x 12" for right border

Cut (1) strip 7" x 8" for fusing, cut into (10) strips ⅝" x 8" for right border

Cut (1) strip 5" x 11" for fusing, leave uncut for bottom right corner

4248-G ½ yard Lt. Lime Tracks 'n' Circles (blocks)

Cut (4) strips 1¼" x 14" for block center

Cut (2) block sides, 1 reversed

4248-P ½ yard Lt. Purple Tracks 'n' Circles (blocks, border base & stripes)

Cut (1) right border base strip 6" x 39½"

Cut (2) strips 4½" x 14" for block center

Cut (3) strips 1½" x 14" for block center

Cut (4) strips 1¼" x 14" for block center

Cut (1) strip 3" x 8" for fusing, cut into (4) strips ⅝" x 8" for left border

4249-K ¾ yard Black Floating Squares (blocks, border base)

Cut (1) bottom border base strip 6" x 32"

Cut (1) left border base strip 6" x 11"

Cut (2) strips 4½" x 14" for block center

Cut (3) strips 1½" x 14" for block center

Cut (8) strips 1¼" x 14" for block center

Cut (2) block sides, 1 reversed

4249-N 1 yard Brown Floating Squares (blocks, border stripes)

Cut (6) strips 4½" x 14" for block center

Cut (9) strips 1½" x 14" for block center

Cut (4) strips 1¼" x 14" for block center

Cut (4) block sides, 1 reversed

Cut (1) strip 2" x 18" for fusing, cut into (2) strips ⅝" x 18" for bottom border

Cut (1) strip 6" x 8" for fusing, cut into (8) strips ⅝" x 8" for left border

4249-P 1¼ yards Purple Floating Squares (blocks, border base & stripes)

Cut (1) top border base strip 6" x 36"

Cut (1) left border base strip 6" x 20½"

Cut (1) bottom border base strip 6" x 14½"

Cut (1) right border base strip 6" x 12"

Cut (1) right border base strip 6" x 6"

Cut (2) strips 4½" x 14" for block center

Cut (3) strips 1½" x 14" for block center

Cut (4) strips 1¼" x 14" for block center

Cut (2) block sides, 1 reversed

Cut (1) strip 2" x 18" for fusing, cut into (2) strips ⅝" x 18" for bottom border

4250-N ½ yard Tan DNA Strands (blocks)

Cut (2) strips 4½" x 14" for block center

Cut (3) strips 1½" x 14" for block center

Cut (4) strips 1¼" x 14" for block center

Cut (2) block sides, 1 reversed

Limelight Quilt

* Additional fabric required for backing and invisible binding.

*3077-N2 2¾ yards New Brown Lonni's Petals
(backing, binding)

Cut (2) panels 30" x 49", pieced to fit quilt top with overlap on all sides

Cut (2) 3½" x 51½" strips for invisible binding (optional)

Cut (2) 3½" x 41½" strips for invisible binding (optional)

[Traditional binding: Cut 3 strips 2½" x 65", cut lengthwise beside backing panels]

Block Cutting

Each of the 12 blocks is made from 3 fabrics. Fabric A makes the top, bottom, and wider stripes of the center pyramid triangle. Fabric B makes the 4 narrower stripes inside the pyramid triangle. Fabric C is used in the 2 background triangles on the outside corners of the block.

For each block:

From Fabric A: Cut (2) strips 4½" x 14" and (3) strips 1½" x 14"

From Fabric B: Cut (4) strips 1¼" x 14"

From Fabric C: Cut 1 block side and 1 reversed

Note: The cutting for entire quilt is listed in the Fabric and Cutting Requirements above.

The fabrics are used in the following combinations:

[Block 1] Fabric A: 4250-N. Fabric B: 4249-K. Fabric C: 4249-N.

[Block 2] A: 4249-N. B: 3077-LG. C: 4247-L.

[Block 3] A: 3077-N2. B: 4247-L. C: 4249-K.

[Block 4] A: 4249-N. B: 3077-LG. C: 4248-G.

[Block 5] A: 4247-N. B: 4248-P. C: 3077-K.

[Block 6] A: 4249-P. B: 4248-G. C: 4247-L.

[Block 7] A: 3077-LG. B: 4249-K. C: 3077-N2.

[Block 8] A: 4249-K. B: 4249-N. C: 4250-N.

[Block 9] A: 4247-L. B: 4250-N. C: 4247-N.

[Block 10] A: 4249-N. B: 4247-L. C: 4249-P.

[Block 11] A: 3077-N2. B: 4249-P. C: 4247-L.

[Block 12] A: 4248-P. B: 4247-N. C: 4249-N.

Block Construction

1. Make a template of the block center pattern from see-through plastic, reversing the template to complete both halves. With a ruler, extend the lines of the strips into the right half of the acrylic template. Note that the angled sides have ¼" seam allowances and the outside bottom edge of the template has ½" seam allowance. Because the piecing is a little tricky, the extra allowance around the outer edge allows for squaring up the blocks later.

Work with the fabrics for one block at a time so you don't get confused. Cut the strips listed above from the A and B fabrics for one block. Refer to Diagram 1 and join the strips in the order shown. Finger press each seam open as you go, and press the pieced band before cutting. Position the full-size block center template on the pieced band, aligning drawn lines with the seams of the band (Diagram 2). Don't worry if your seams don't precisely line up with the drawn lines on the template. Just be sure that the seam between the bottom fabric B strip and the second from the bottom fabric A strip bisects the bottom left corner of the sewing line, not the bottom outer corner of the template. That spot is marked with a red star. It is important that all block centers are cut with the strips at the same angle. Cut the triangle. Mark the sewing lines on the back of the triangle at the corners. Repeat with each combination of A and B fabrics to make 12 pieced triangles.

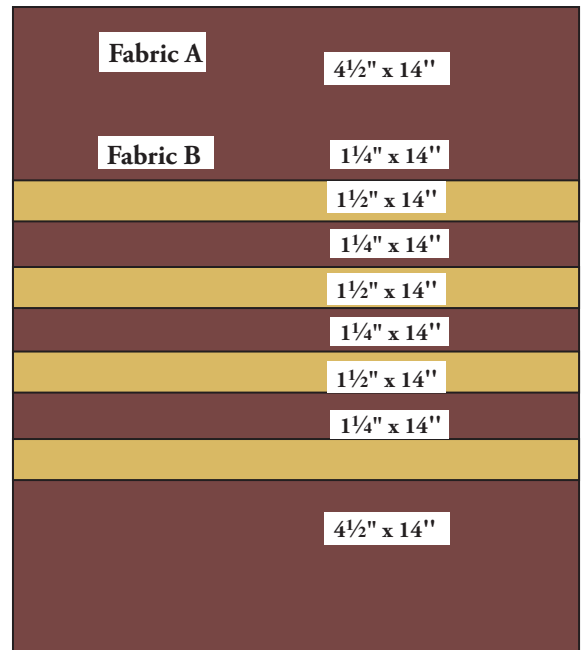


Diagram 1

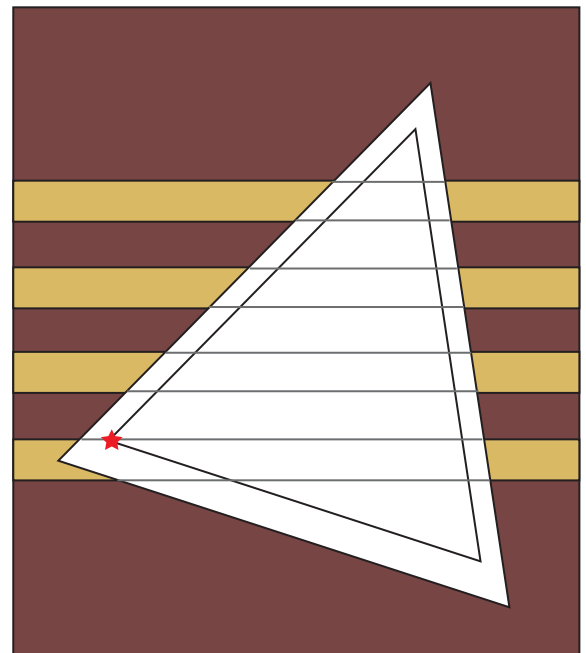


Diagram 2

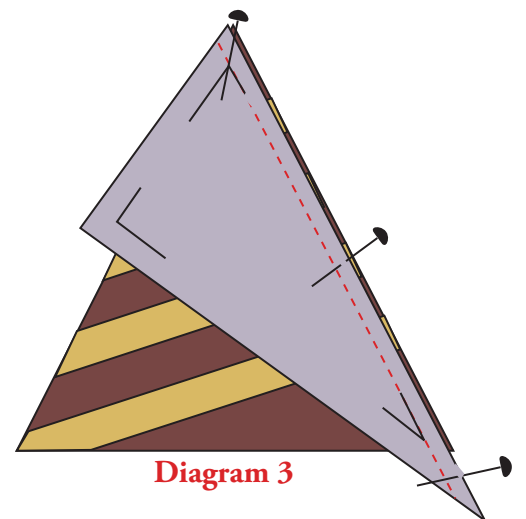
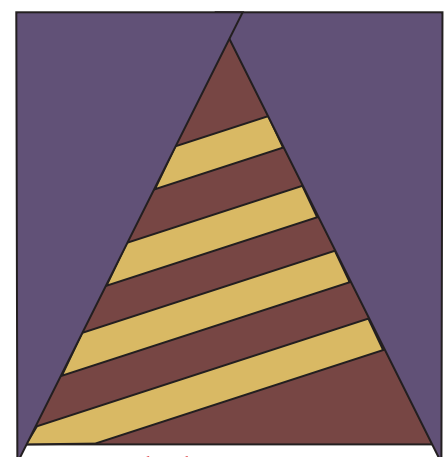


Diagram 3



Block Diagram

Limelight

2. Make a template of the block side pattern. Cut a patch and a reversed patch from the appropriate C fabric. Mark the sewing lines on the back of the fabric patches at the corners. Matching drawn seam lines, sew side patches to the pieced center triangle with $\frac{1}{4}$ " seams (Diagram 3). Press the seam allowances away from the center triangle. The block is larger than needed because of the $\frac{1}{2}$ " seam allowances around the outside edges. (Block Diagram) Center a large square acrylic ruler on the block, and trim the block on all sides to $10\frac{1}{2}$ " square. Be sure that a generous $\frac{1}{4}$ " seam allowance remains above the tip of the center triangle. Make 12 blocks in the combinations listed.

Border Base Construction and Quilt Assembly

3. Join blocks in 4 rows of 3 blocks each in the order shown. Press seam allowances between blocks in opposite directions in alternating rows. Join the rows.
4. Refer to the Border Diagrams throughout. Three of the borders are made with base strips that are joined along their angled ends. From the fabric listed on each border base strip, cut a rectangle that is the measurement shown. Note that all measurements include seam allowances. If one or both ends need to be trimmed, measure from the end of the strip the measurement shown, mark a dot, and trim the angled end from the corner to the dot. Draw a $\frac{1}{4}$ " seam allowance at the angled ends to help when sewing strips together (Diagram 4). Join the trimmed strips by stitching ends together, matching drawn seam allowances, and offsetting strips as shown. Once you have stitched one or two strips together, you should be able to "eyeball" the offset. Note: The two strips for the bottom border are joined at an extreme angle, so much offsetting is necessary. Be sure to draw in the seam allowances and pin before sewing (Diagram 5). Join base strips to make four borders.
5. Refer to the Base Quilt Diagram. Sew borders to the quilt in this order. Sew the bottom border to the quilt first. Trim the ends even with the quilt if necessary. Sew the left side border, the top border, and the right side border, trimming ends if needed. Press the quilt from the back.

Fused Border Stripes

6. To prepare the fused stripes for the borders, press the strips listed "for fusing" to fusible webbing. Cut all strips $\frac{5}{8}$ " wide by the lengths listed. The only exception is the $5" \times 11"$ strip of Brown/Purple Swirl Bursts that is used in the bottom right corner of the quilt. Once the stripes are cut, remove the backing paper.

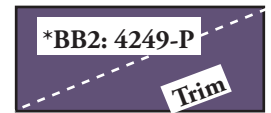
Top Border Cut 6" x 36"



Left Bottom Border Cut 6" x 32"

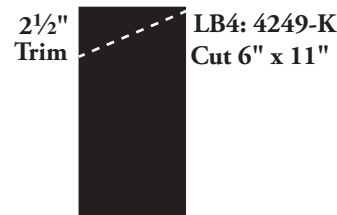
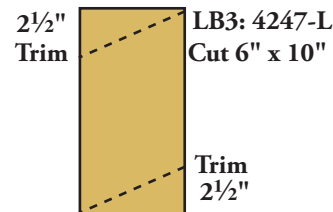
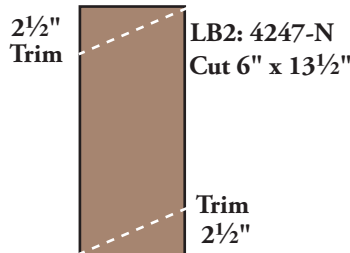
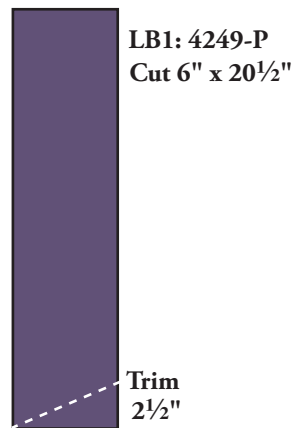


Right Bottom Border



14 $\frac{3}{4}$ " 6" x 14 $\frac{1}{2}$ "
*Use these patches.

Left Border



Right Border

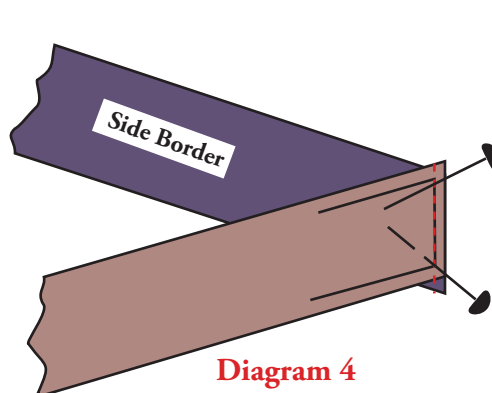
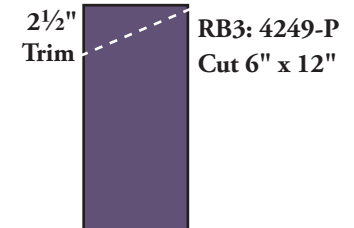
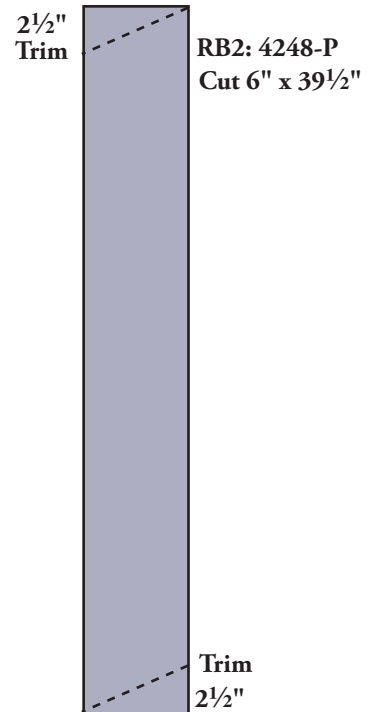
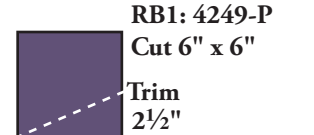


Diagram 4

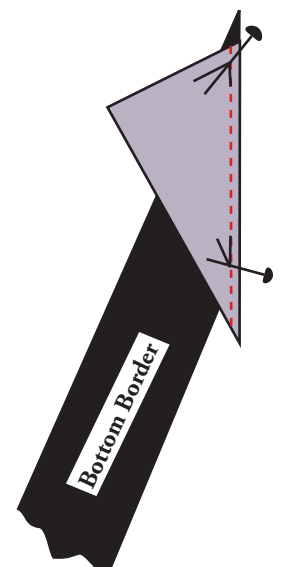


Diagram 5

Limelight Quilt

7. Refer to the quilt photograph and the list below for placement, or better yet, follow your own design sensibility to arrange the stripes as you wish. Note that some of the stripes are only in a border, some move from the right border into a block, and some go from one border to another border. The following lists the color stripes used in each border.

Left Border 1 (LB1): 3 stripes 8" long from 4247-L

LB2: 4 stripes 8" long from 4248-P

LB3: 4 stripes 8" long from 4249-N

LB4: 4 stripes 8" long from 4249-N

Top Border (TB): 4 stripes 18" long from 4247-L

Stripes on right border are grouped together from the top down:

Right Border 2 (RB2): 5 strips 8" long from 4247-N

RB2: 4 stripes 8" long from 4247-N

RB2: 4 stripes 12" long from 4247-N (stripes end at right edge of center triangle of block 12)

RB2: 1 stripe 8" long from 4247-N

Stripes on bottom border are grouped together from left to right:

Bottom Border (BB1): 2 stripes 18" long from 4249-N

BB1: 2 stripes 18" long from 4249-N

BB2: *2 stripes 21" long from 4247-N* (See Below.)

BB2: 1 stripe 5" x 11" from 4247-N for bottom right corner

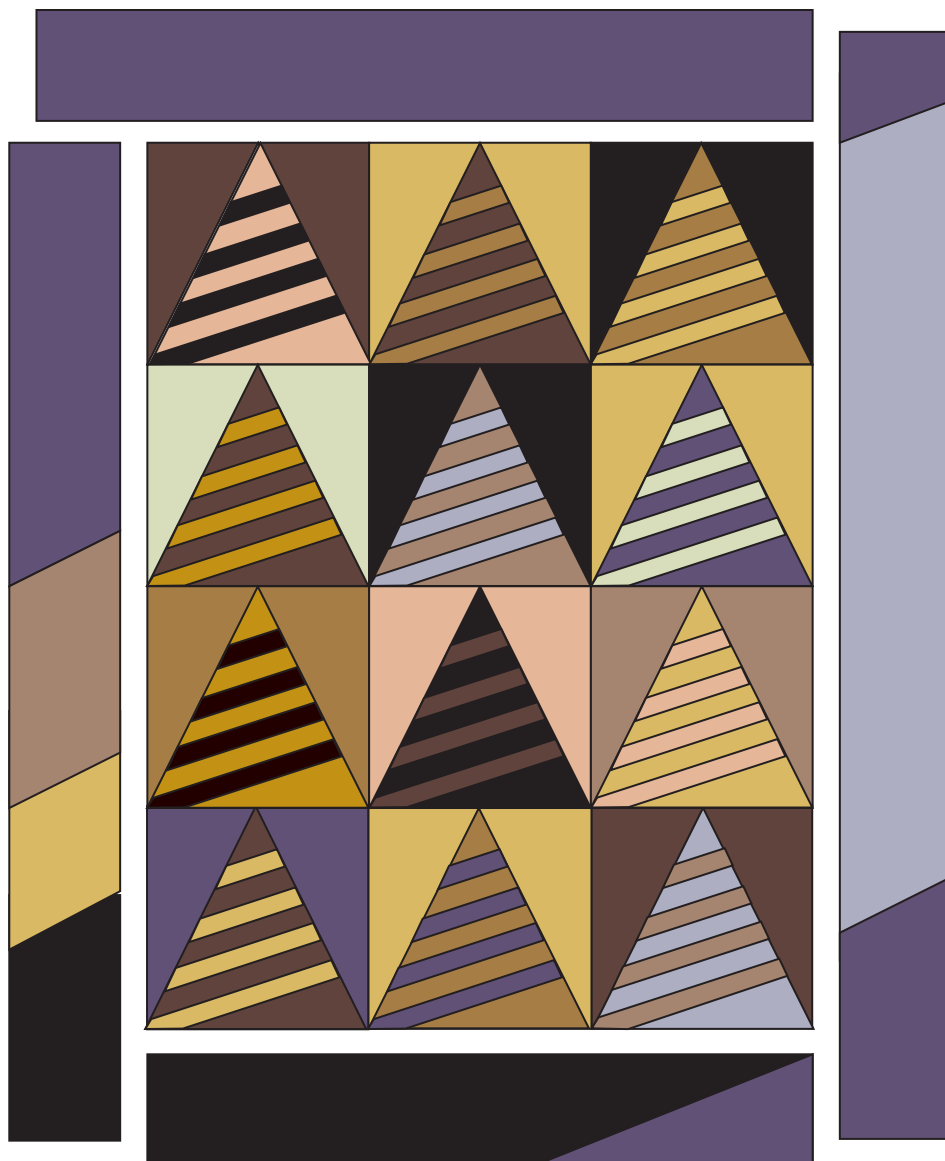
*The first 21"-long stripe is fused so that part of it extends over the bottom right corner of block 12. Before you fuse this strip, trim away the portion that would cover up the block corner. The block appears to "float" into the border.

Working on a design wall, arrange the ready-to-fuse stripes on the quilt and pin in place. Use a yardstick to align the stripes from one part of the quilt to another so the stripes look continuous as they do on Lonni's quilt. Stand back from your design wall, or look at the quilt through the wrong end of binoculars to be sure that you are satisfied with the arrangement.

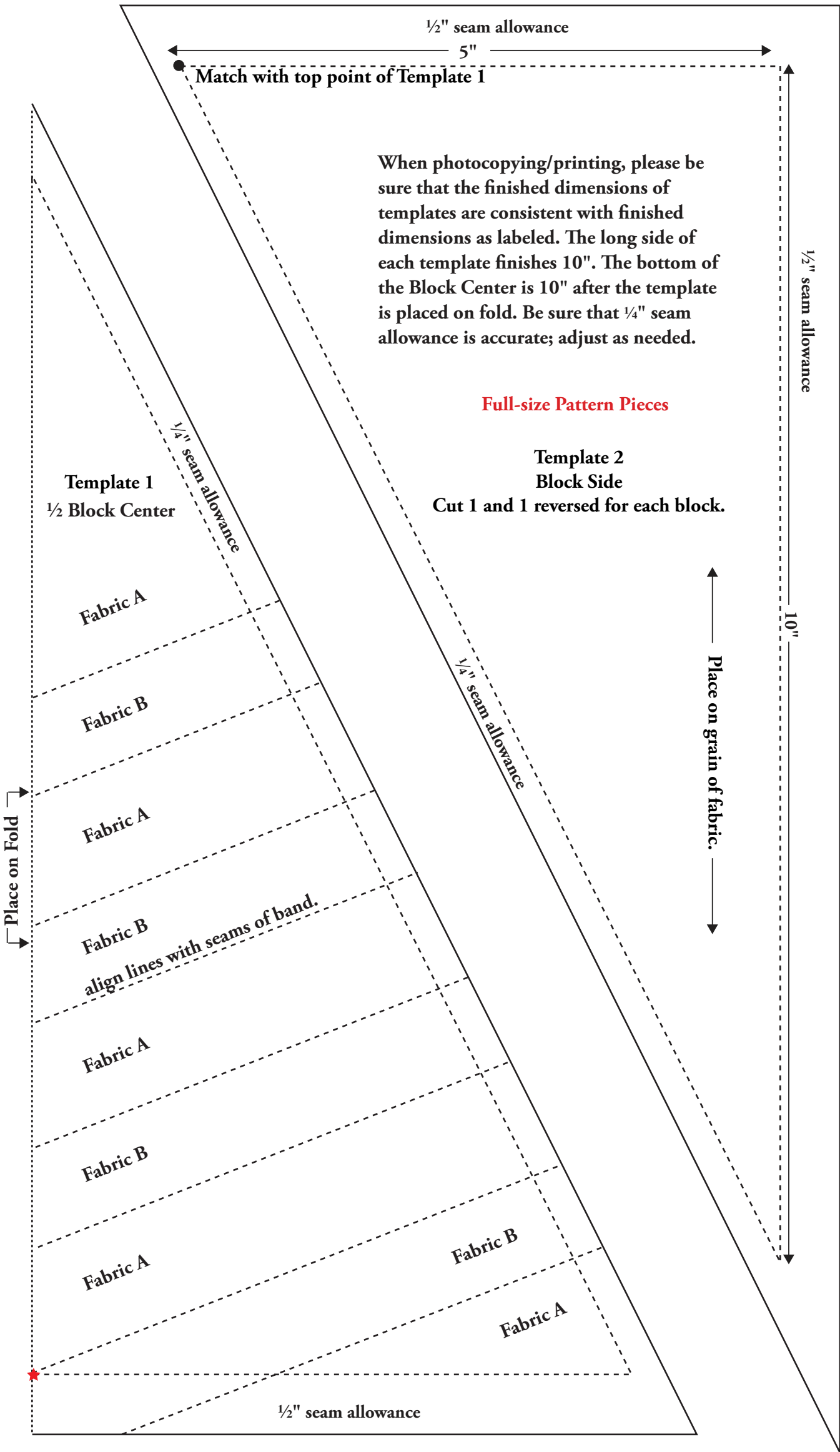
8. Trim each end to match the seam it's touching as you prepare to fuse the stripe in place. It is not necessary to trim the ends that touch the outside edges of the quilt before fusing. Lonnie suggests that you can iron the stripes to the quilt while the quilt is attached to your design wall. Following manufacturer's directions, fuse each stripe to the quilt. Trim ends that stick out even with the quilt's raw edges.

Finishing the Quilt

9. Layer quilt with batting and backing. Free-motion quilt continuous spirals that circle into their centers and out again. Quilt the spirals as small as 2" across and as large as 4" across. Once the quilting is finished, square up the quilt if necessary. The borders are extra wide to allow for this final squaring.



Base Quilt Diagram



Limelight Quilt

Lonni's "Invisible" Binding

The directions here are for binding that does not show on the front of the quilt. Strips of fabric are stitched around the quilt to frame it, corners are mitered (just like a border would be mitered), and then the entire frame is

pressed to the back of the quilt. Although the illustrations show a different quilt, these directions apply to any quilt in which you want the design to be uninterrupted by a line of binding at the edge.

Step 1

First, "square up" the quilt when you have finished quilting by trimming it so that all sides are even and square.

Step 2

Cut 4 strips of the backing fabric with the grain. Two of the pieces are 3½" wide x (length your quilt) long, and two pieces are 3½" wide x (width of your quilt) long.

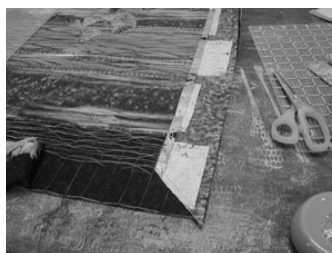
Step 3

Mark one long edge on each piece at ½" and fold over, ironing to create a permanent crease.

Step 4

Lay quilt face up on a table. Lay one strip right side to right side on the edge of the quilt top with the folded, pressed edge facing toward the inside of the quilt (and away from you.) Basically, you are making a frame for the quilt using the binding strips; these will be turned to the back after stitching to the front of the quilt, just as you would with a traditional bias binding.

Center each strip on the quilt perimeter, and starting at the center, pin the binding to the quilt to within 6 inches of each corner. Continue in this manner until you have pinned the binding strips to all four edges of the quilt top.



Step 5

Using a triangle, mark the miter corners for each piece, being sure to add the seam allowance. Trim off excess fabric at angle. With right sides together, pin corners and sew miters. This gets tricky, but works best to assure a perfectly fit corner. Do not remove the pinned binding from the quilt; just sew those mitered corners convincing the quilt to stand back while you sew them.



Step 6

Finger press seams open, smooth down and finish pinning corners to quilt top. Using a walking foot, sew binding to quilt top using a ⅜" seam all the way around, all four sides.

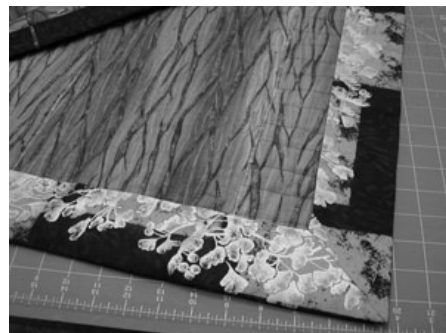
Step 7

Trim points from corners, turn binding to back, making sure to "point" the corners.



Step 8

Steam press so the edge is straight and the quilt lays flat. Whip stitch binding to back of quilt, being careful not to let any stitches show through to the front of the quilt.



Elegant Universe

by Lonni Rossi

Limelight Quilt

Featuring the
Elegant Universe Collection
by Lonni Rossi



makower uk[®]

1384 Broadway · New York, NY 10018
(800) 223-5678 · www.andoverfabrics.com



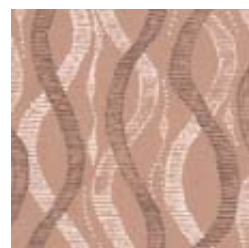
4247-K



4248-AK



4248-K



4250-N*



3077-C



3077-K*



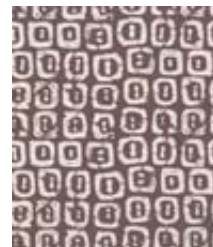
4249-K*



4249-N*



4251-K



4251-N



3077-LG*



3077-N2*



4247-N*



4248-E



4248-P*



4250-E



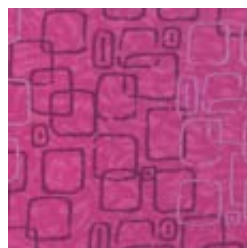
3077-E



3077-L



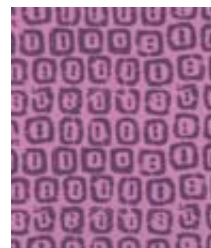
3077-P



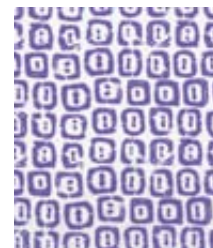
4249-E



4249-P*



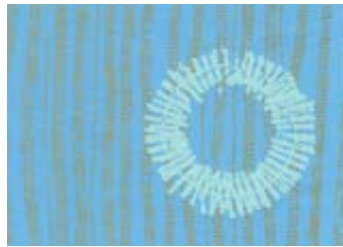
4251-E



4251-P



4247-L*



4248-B



4248-G*



4250-L



3077-B1



3077-GL



4249-B



4249-G



4251-G



4251-T



3077-T



3077-W

*Indicates fabric used in quilt pattern. Fabrics shown are 20% of actual size.